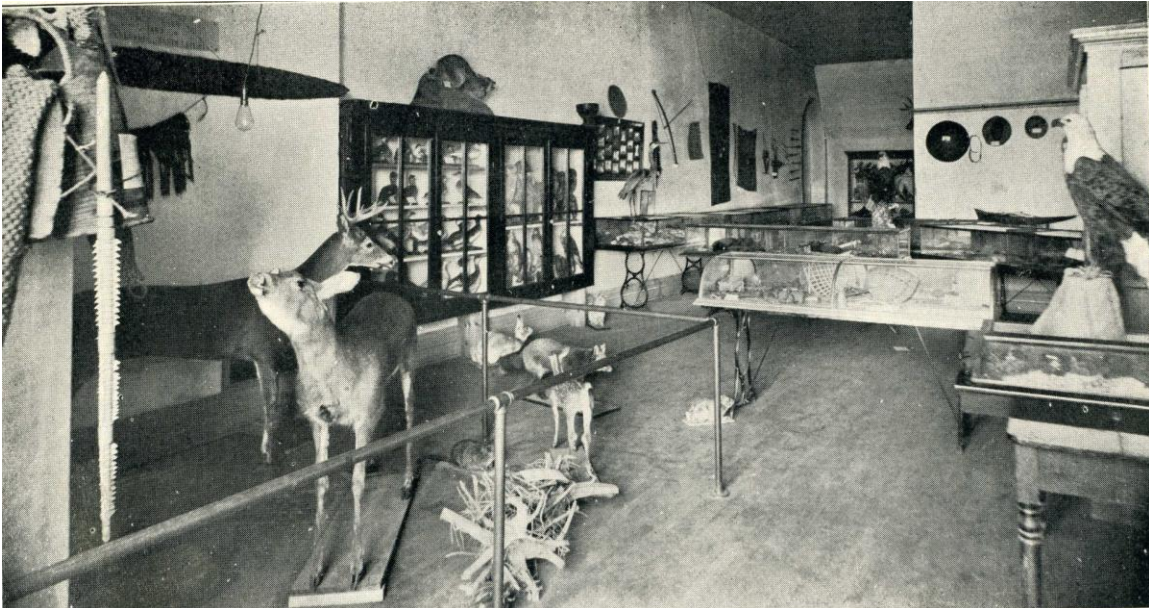


THE MELVILLE MUSEUM

For this addition to our high school we are deeply indebted to Mr. W. P. Melville. The museum, a cut of which appears on the opposite page, is located on the third floor. It was started in the fall of 1900, but so rapidly have additions been secured that it has far outgrown its present quarters. Without doubt it represents the best collection of mounted birds and animals to be found in this section of the state. Not only have

Chippewa County and the surrounding region contributed to make it attractive, but many states and not a few foreign countries have donated until the number of specimens has almost reached five thousand. The collection furnishes valuable materials for the study of birds, eggs, minerals and fossils and furnished opportunity for investigation which could otherwise not be enjoyed. The generous friends of the school, through whose efforts such a splendid beginning has been made are worthy of our sincere thanks, and we confidently believe that with the help of alumni and friends the museum can become one of the most attractive features of the high school.

Reprinted from
The Bema 1905



HIGH SCHOOL MUSEUM HAS FINE COLLECTION

Melville Bird Collection is Big Feature

The Sault High School is very fortunate in having the finest school museum in the state. In fact few schools anywhere in the country can boast a museum like ours.

The largest and most interesting collection is of birds, many collected by Mr. Melville. This consists of mounted birds and skins of almost every bird to be found in the Upper Peninsula. Ex-Gov., Chase S. Osborn has enriched the museum with many interesting objects, bird skins from Africa, and weapons and articles of clothing worn by the Africans.

Judge Joseph H. Stecre, a resident of the Sault, has contributed many articles, mounted specimens of moose, deer, lynx, wild cat, fox, porcupine, skunk with young, squirrels, young seal, muskrat, and many small animals add in the interest. There is a large collection of metal and mineral specimens.

A particularly large and interesting collection of native birds' eggs and nests, as well as nests and eggs of foreign birds is in this room.

Articles from the Philippines, Indian arrow heads, Civil War articles, and many other things of interest, too numerous to mention, make the museum a fascinating place for old and young. Many Sooites as they have traveled in distant countries have remembered the High School Museum and have collected things of interest and value for it. The large and commodious room in the new building will house double or treble the number of specimens when suitable cases are provided. Be proud of your museum; boost it wherever you are. Visit it often, and lend both your aid and your encouragement to the Superintendent and School Board to make it more and more useful and instructive.

Printed in the Sault Evening News Publication – Re-dedication Special- THE COME BACK- Thursday, May 5, 1921

SAULT HIGH'S FINE MUSEUM

The Melville Museum stands in the third floor corridor of Sault High. It is considered one of the best school museums in Michigan and to justify partly this statement the incident is recalled when the University of Michigan recently borrowed several rare specimens from this museum to use for educational purposes at Ann Arbor.

In 1900 Mr. W. P. Melville, formerly a photographer and also connected with the Michigan Northern Power Company, donated one-half of his private collection of birds and shells to Sault High. He placed the remainder of his museum at the school's disposal, providing it furnished suitable cases and insurance. Later on the school board purchased the first loan.

For three years after the establishment of the museum in the school, Mr. Melville gave lessons in taxidermy during the winter months to Sault High boys. Together they collected and mounted about one-hundred new birds.

The contributions of Honorable Chase S. Osborn, former governor of the state of Michigan, to the museum, have been liberal. While traveling in northern Europe, Mr. Osborn collected several rare birds, and later in Australia, New Zealand and the oceanic islands of the South Pacific he obtained other collections. Students should especially note the wingless New Zealand bird, the Apteryx, which is in the first case in the west end of the corridor. This bird is now nearly extinct.

Mr. R. D. Perry and Mr. Frank Reed and family were also contributors to the Melville museum.

Through the interest of friends of the school there are now between five and six thousand specimens in the cases; although some have become decomposed. There is scarcely a country studied in geography that is not represented in the museum by some specimen of bird or animal.

For these unusual contributions Sault High is indebted to many citizens interested in local education.

Reprinted from

SU-HI

Published by the Keynote

Tercentenary Edition 1635—1935

CONTRIBUTION TO MUSEUM IS MADE BY MR. OSBORN

Reprinted from The Keynote Vol. 1. No. 8

November 18, 1925

A Canada red lynx, one of the largest ever found in Canada has been contributed to the Sault High School museum by Mr. Osborn.

The lynx was trapped in the Algoma country twenty years ago. Mr. Osborn had set a small trap in the woods intending to capture one of the small species of lynx and after a while had forgotten about the trap. About two months later while his boys were tramping in the woods they came upon a lynx apparently in the trap Mr. Osborn had set. One ran back for a gun while the other stayed and watched the lynx which was afterward shot and brought back to camp. Mr. Vigeant of this city stuffed and mounted the animal and since then it has hung in the attic of the Osborn home.

Mr. Osborn also contributed some fine specimens of different metals to the museum and an unexploded shell which was found near For Drummond.

MUSEUM RECEIVES RELICS PRESENTED BY OSBORN

Reprinted from The keynote Vol. 1 No. 19

March 24, 1926

Governor Osborn recently sent several very interesting relics to the school museum. One of these was an old Hudson Bay Indian gun bullet, which was found by Lee J. Smits. The receding water in St. Mary's river disclosed it at East Neebish. It is an interesting historical relic.

Another article is a "Cocas de mer," (Cocoanut of the sea) which was found at Seychelles, same islands in the Indian Ocean. It is a double cocoanut weighing ten pounds at present, and probably was much heavier at the time when it was found, in 1913. This variety takes two or three years to ripen, and is found only in these islands in the Indian Ocean. It is in Miss Ingle's room at present. A shield which belonged to a Zulu warrior was also sent. It is down in the book room.